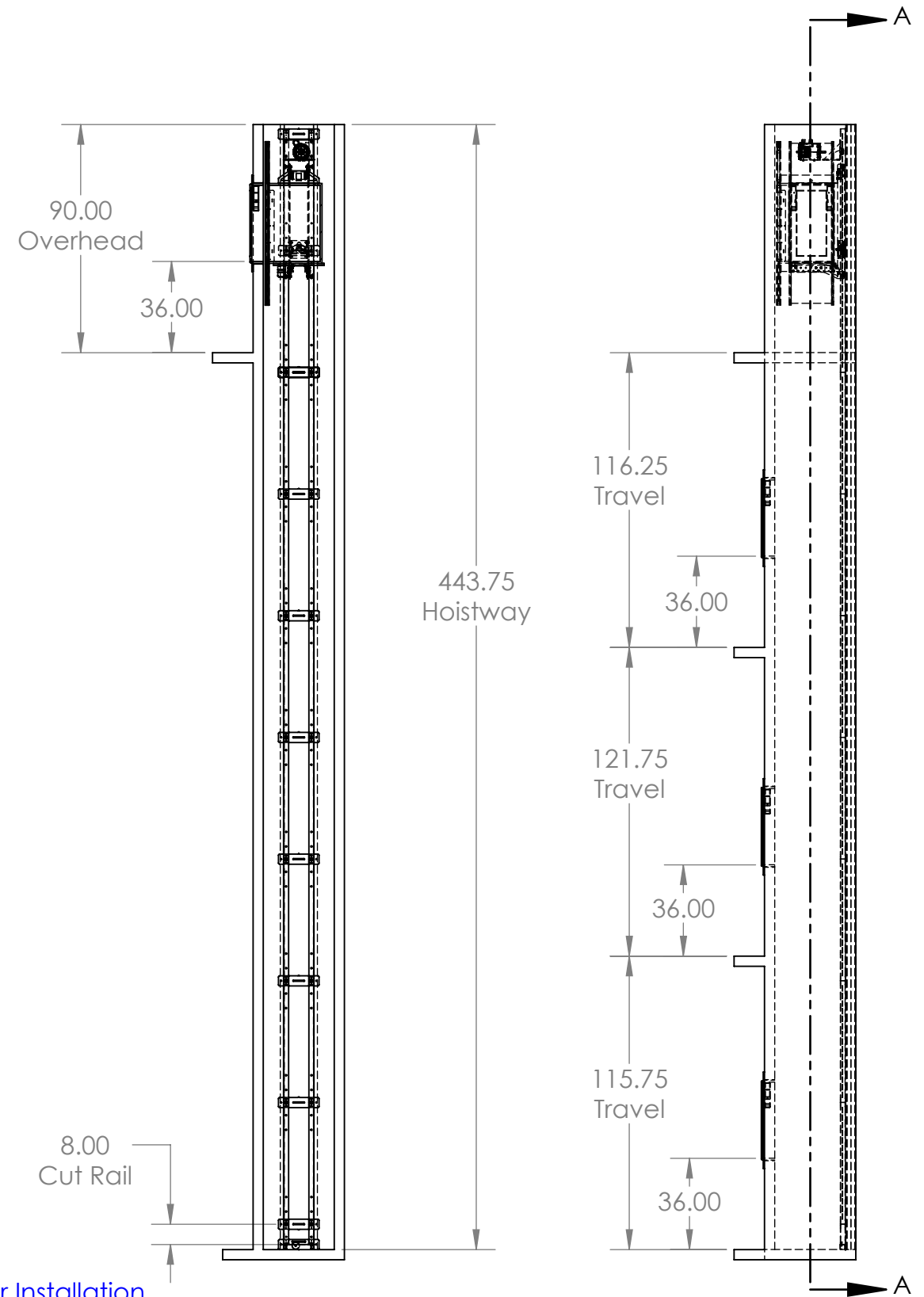
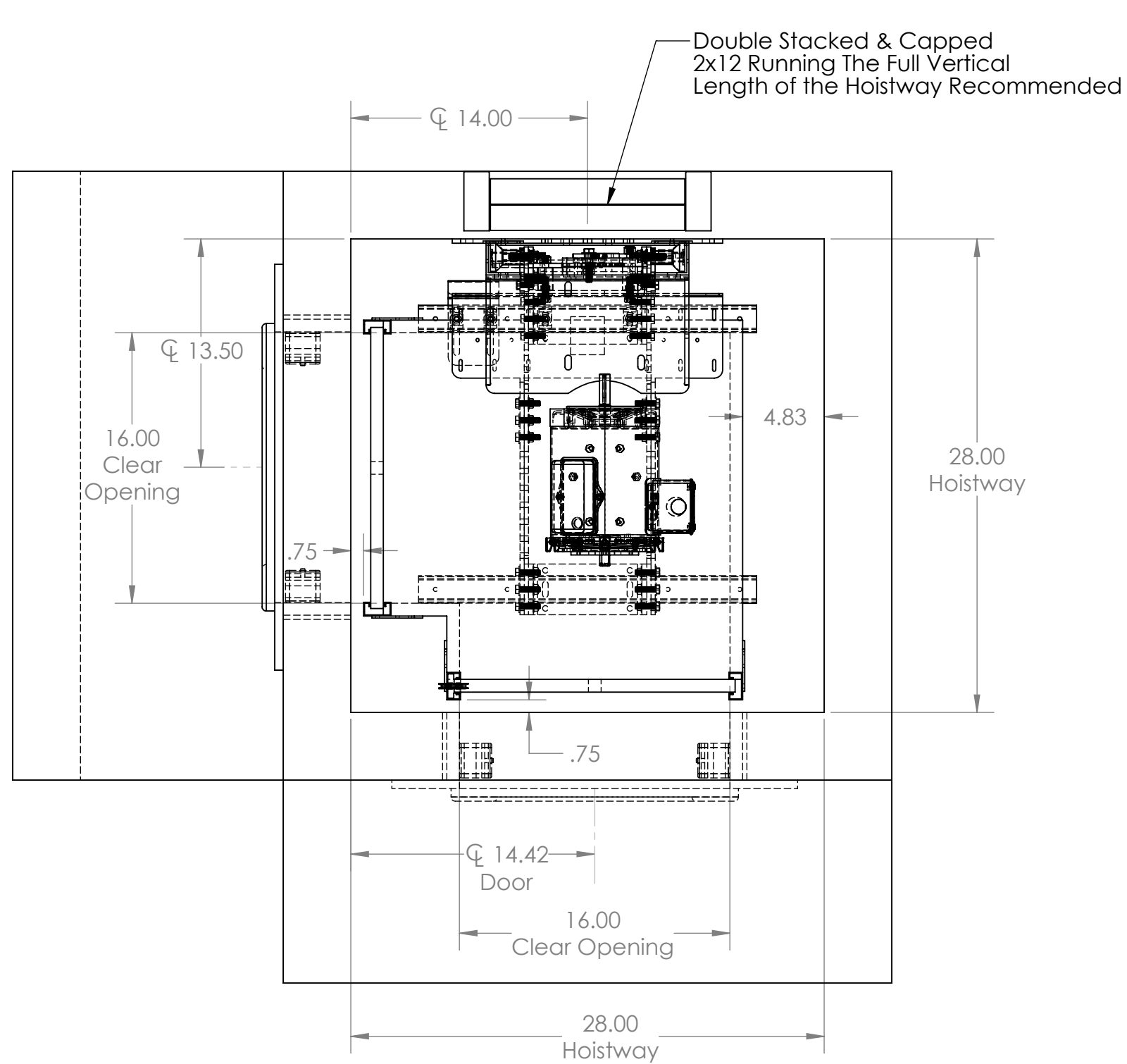


QS-200 Specifications

MODEL		QS-200
CAPACITY		200lbs
SPEED		32 FPM (Nominal)
DRIVE		SPROCKET DRIVEN GEAR MOTOR
DOOR LOCKS		HONEYWELL RELIALIGN ELECTROMECHANICAL INTERLOCKS
OPERATION		AUTOMATIC OPERATION, MANUAL DOORS
FINISH		Pre-finished Maple
ELECTRICAL REQUIREMENTS		CONTROLLER COMES EQUIPPED WITH A 120VAC PLUG/PIGTAIL. REQUIRES A DEDICATED CIRCUIT, 120VAC, 15AMP OUTLET WITHIN SIGHT OF THE LIFT. FOR JURISDICTIONS WHICH REQUIRE THE CONTROLLER TO BE HARDWIRED, HARD WIRE INTO APPROPRIATE DISCONNECTING MEANS.
CONTROL SYSTEM		PLC, RELAY, PLUG'N'PLAY FIELD WIRING
CODE		AMSE 17.1.7



	Cab Size	16 x 16 x 30 - 90	Pre-finished Maple	90 Degree	DO NOT SCALE DRAWING		NAME	DATE	PROJECT NAME	
	RH Locks	1	Top Mount	200lbs		APPROVAL STATUS:	DRAWN	JCE	3/31/20	PROJECT LOCATION
	LH Locks	3	Doors & Frames BY OTHERS	Machine Access Door - Kill Switch		APPROVED	PROPRIETARY AND CONFIDENTIAL THE INFORMATION CONTAINED IN THIS DRAWING IS THE SOLE PROPERTY OF PRECISION LIFT INDUSTRIES, LLC. ANY REPRODUCTION IN PART OR AS A WHOLE WITHOUT THE WRITTEN PERMISSION OF PRECISION LIFT INDUSTRIES, LLC IS PROHIBITED.			COMMENTS:
						APPROVED AS NOTED				
						SIZE A	DWG. NO.	REV. B		



Recommend Front Face of Hoistway Open for Installation



Cab Size	16 x 16 x 30 - 90	Pre-finished Maple	90 Degree
RH Locks	1	Top Mount	200lbs
LH Locks	3	Doors & Frames BY OTHERS	Machine Access Door - Kill Switch

DO NOT SCALE DRAWING	
APPROVAL STATUS:	
APPROVED	
APPROVED AS NOTED	
REVISE AND RESUBMIT	
SIGNATURE	

NAME	DATE	PROJECT NAME
JCE	3/31/20	
PROJECT LOCATION		
COMMENTS:		

PROPRIETARY AND CONFIDENTIAL	REV. B
THE INFORMATION CONTAINED IN THIS DRAWING IS THE SOLE PROPERTY OF PRECISION LIFT INDUSTRIES, LLC. ANY REPRODUCTION IN PART OR AS A WHOLE WITHOUT THE WRITTEN PERMISSION OF PRECISION LIFT INDUSTRIES, LLC IS PROHIBITED.	
SCALE 1:16	SHEET 2 OF 2